

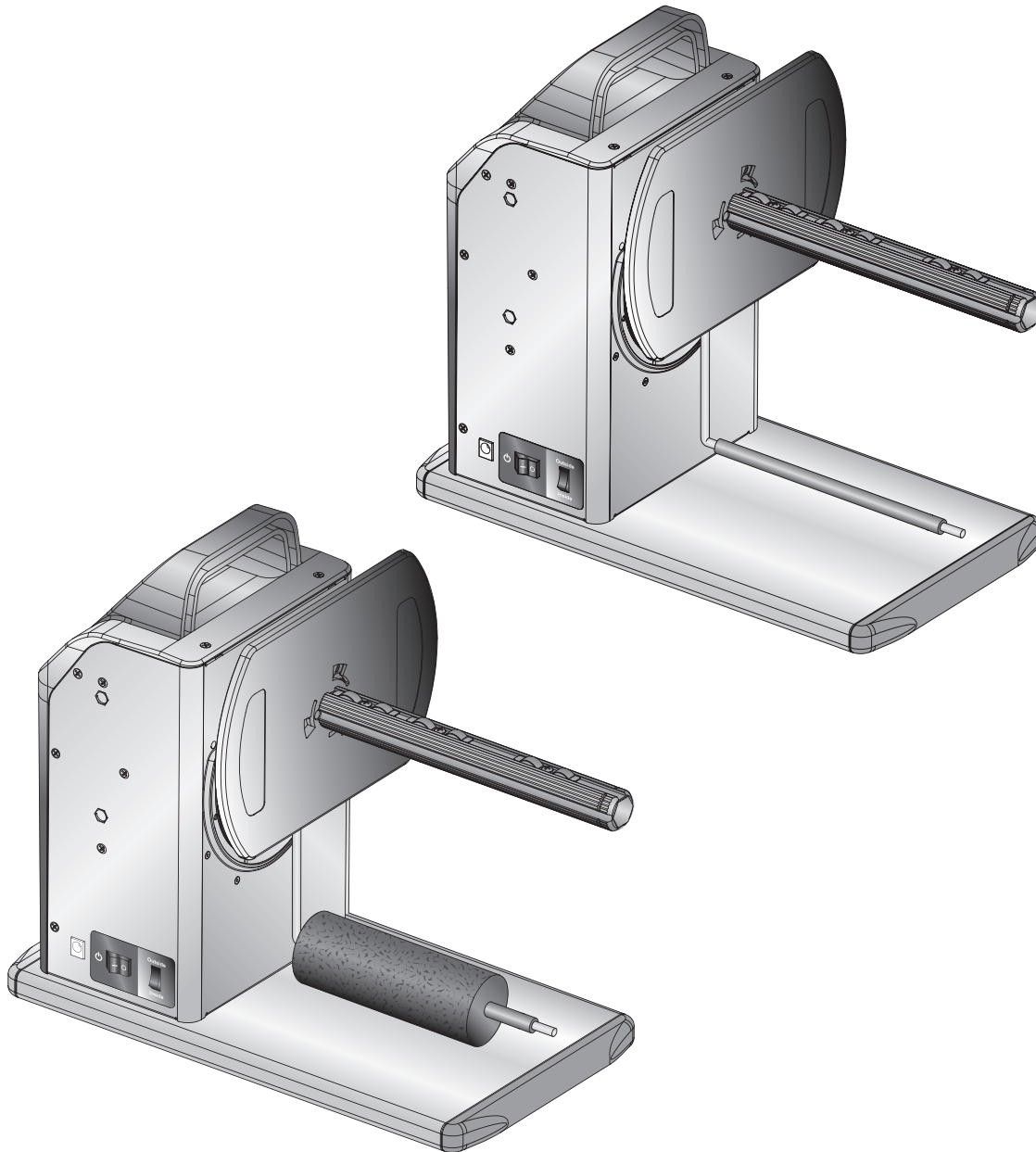
# **RW-7**

**LABEL REWINDER**

---

# **UW-7**

**LABEL UNWINDER**



# User's Guide

# **PRIMERA**

© 2016 All rights reserved  
For the most recent version of this manual please visit  
<http://www.primeralabel.com>

**Notices:** The information in this document is subject to change without notice. NO WARRANTY OF ANY KIND IS MADE WITH REGARD TO THIS MATERIAL, INCLUDING, BUT NOT LIMITED TO, THE IMPLIED WARRANTIES OF MERCHANTABILITY AND FITNESS FOR A PARTICULAR PURPOSE. No liability is assumed for errors contained herein or for incidental or consequential damages in connection with the furnishing, performance, or use of this material. This document contains proprietary information that is protected by copyright. All rights are reserved. No part of this document may be photocopied, reproduced, or translated into another language without prior written consent.

**Trademark Acknowledgments:** Primera is trademark of Primera Technology Inc. All other trademarks are the property of their respective owners.

### **Printing History**

Edition 1.1, Copyright 2016, All rights reserved.

**FCC Compliance Statement:** This device complies with part 15 of the FCC rules. Operation is subject to the following two conditions: (1) this device may not cause harmful interference, and (2) this device must accept any interference received, including interference that may cause undesired operation.

**For Users in the United States:** This product is intended to be supplied by a UL listed Direct Plug-In Power Supply marked "Class 2" or a UL listed ITE Power Supply marked "LPS" with output rated 24v, 0.58 amps or higher. This equipment has been tested and found to comply with the limits for a Class A digital device, pursuant to Part 15 of the FCC Rules. In a domestic environment this product may cause radio interference, in which case the user may be required to take adequate measures. This equipment generates, uses, and can radiate radio frequency energy and, if not installed and used in accordance with the instructions, may cause harmful interference to radio communications. However, there is no guarantee that interference will not occur in a particular installation. If this equipment does cause harmful interference to radio or television reception, which can be determined by turning the equipment off and on, the user is encouraged to try to correct the interference by one or more of the following measures:

- Re-orient or relocate the receiving antenna.
- Increase the separation between the equipment and receiver.
- Connect the equipment into an outlet on a circuit different from that to which the receiver is connected.
- Consult the dealer or an experienced radio/TV technician for help.

Use of shielded cables is required to comply with the Class A limits of Part 15 of the FCC Rules. You are cautioned that any changes or modifications not expressly approved in this manual could void your authority to operate and/or obtain warranty service for this equipment.

**For Users in Canada:** This digital apparatus does not exceed the Class A limits for radio noise for digital apparatus set out on the Radio Interference Regulations of the Canadian Department of Communications. Le présent appareil numérique n'émet pas de bruits radioélectriques dépassant les limites applicables aux appareils numériques de la class A prescrites dans le Règlement sur le brouillage radioélectrique édicté par le ministère des Communications du Canada.

# Table of Contents

---

Section 1: Box Contents..... 1

Section 2: Setup Your RW-7 Label Rewinder/UW-7 Label Unwinder .....2

    2.1 Device Overview .....2

    2.2 Install Core Adaptor .....3

    2.3 Install and Remove the Label Guide.....4

Section 3: RW-7 Label Rewinder Setup .....5

    3.1 Connection .....5

    3.2 Loading the Label Stock .....7

Section 4: UW-7 Label Unwinder .....8

    4.1 Setup for LX2000 .....8

    4.2 Setup for LX500 (for use with labels 3" wide or greater).....9

    4.3 UW-7 / RW-7 Full Production Mode .....10

Section 5: Product Specifications .....11

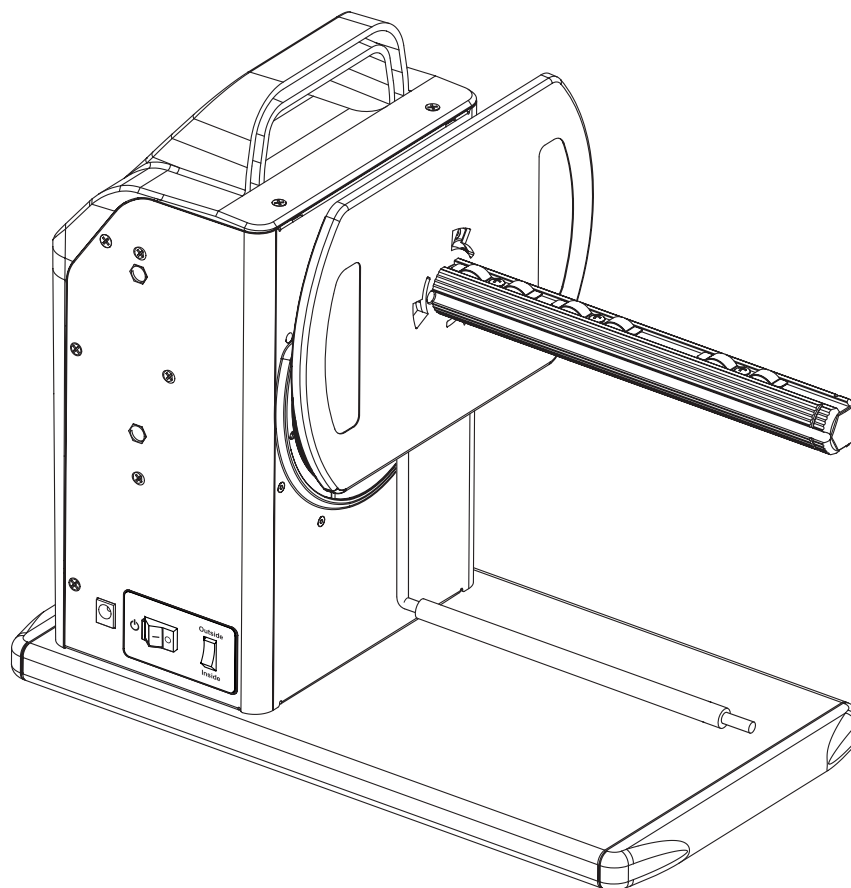




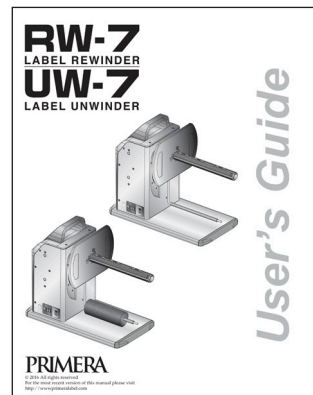
## Section 1: Box Contents

---

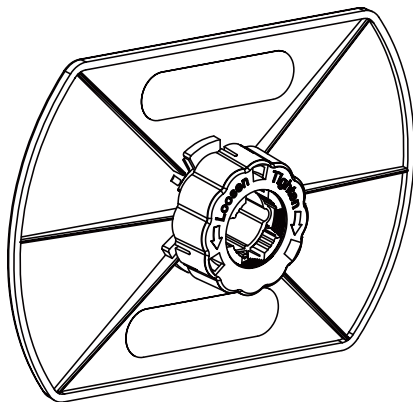
### RW-7 Label Rewinder / UW-7 Label Unwinder



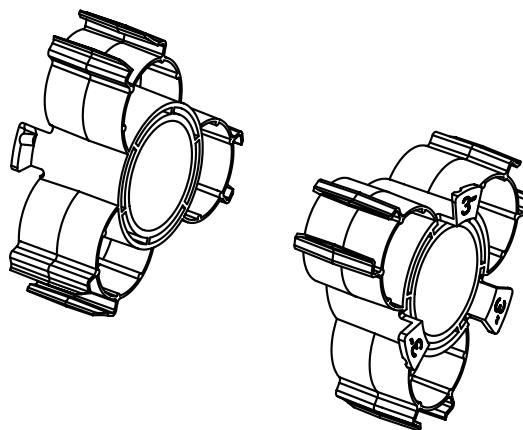
#### User's Guide



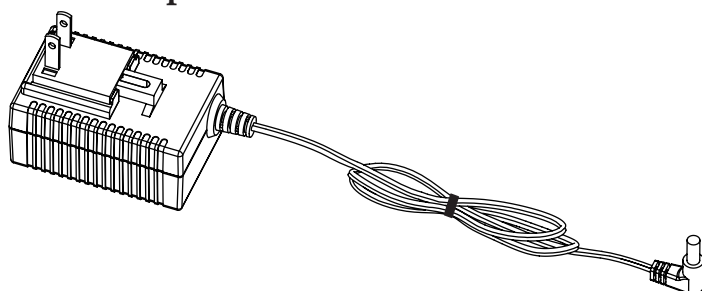
#### Label Guide



#### 3" Adapter



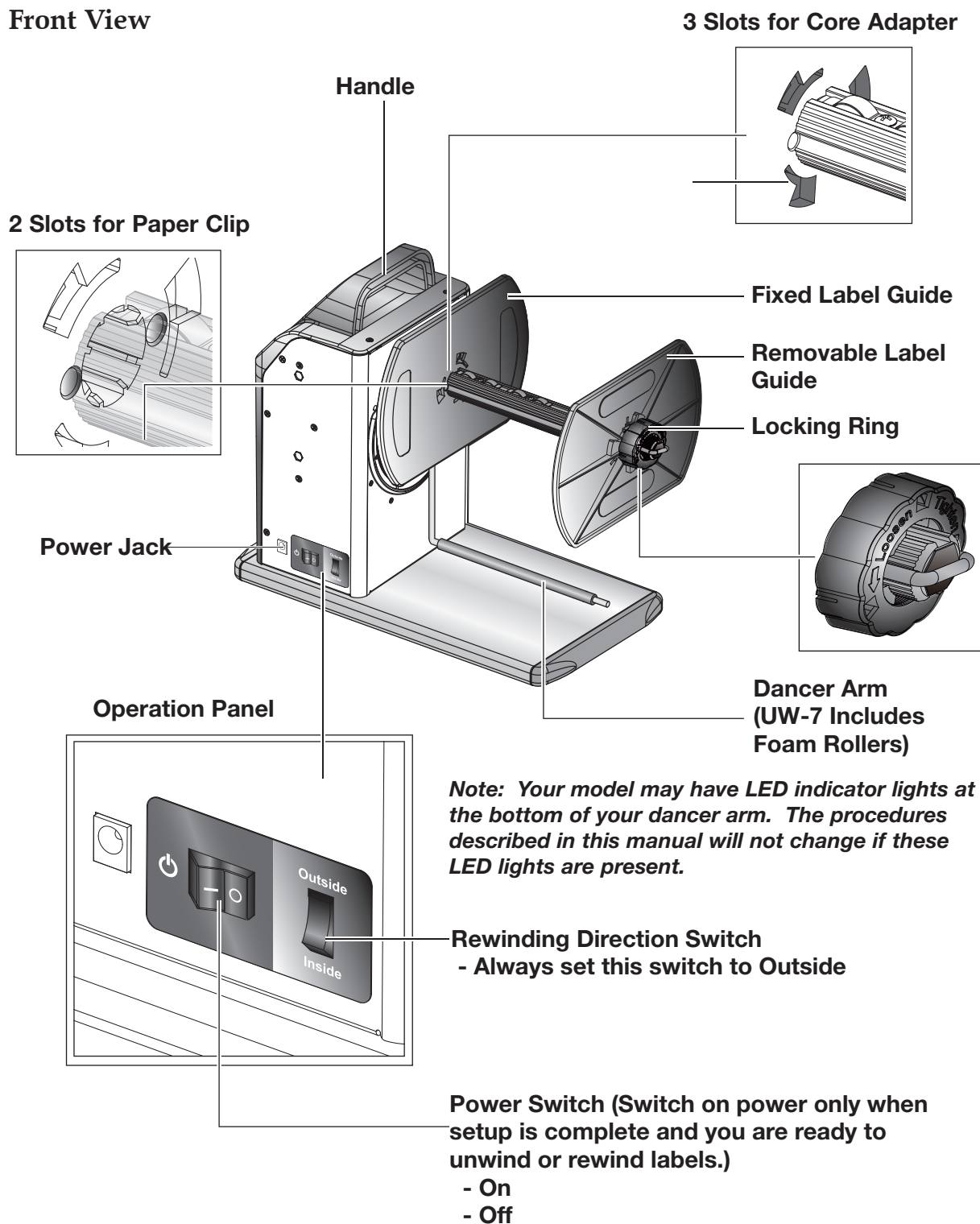
#### Power Adapter



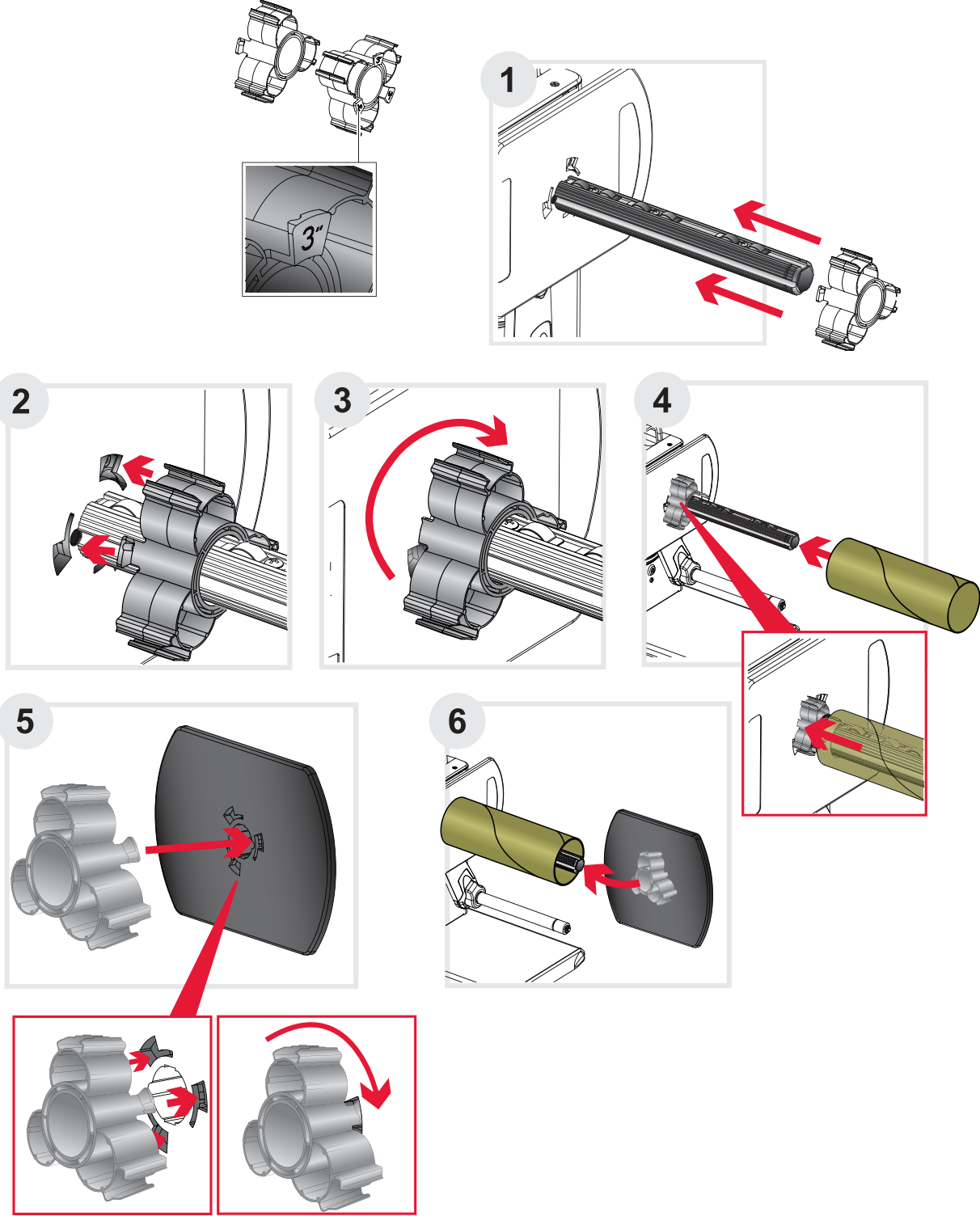
## Section 2: Setup Your RW-7 Label Rewinder / UW-7 Label Unwinder

### 2.1 Device Overview

#### Front View

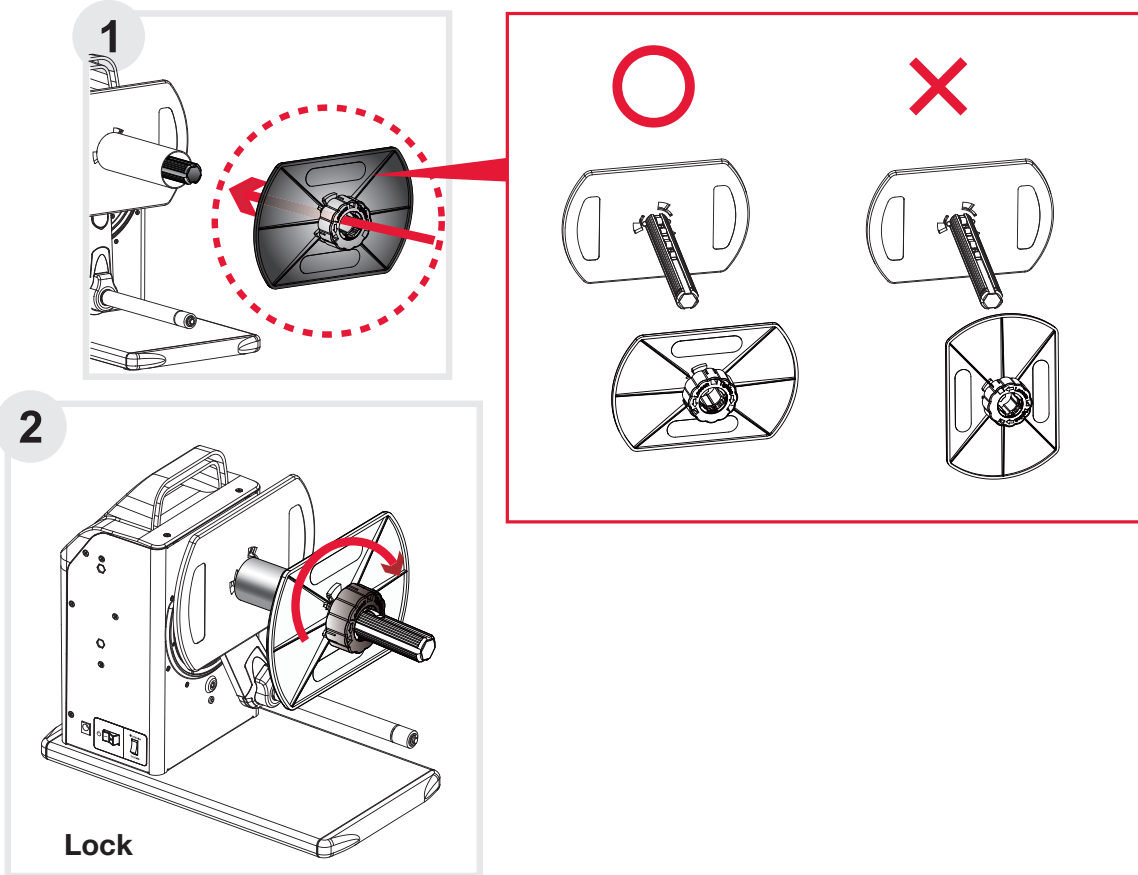


2.2 Install Core Adapters

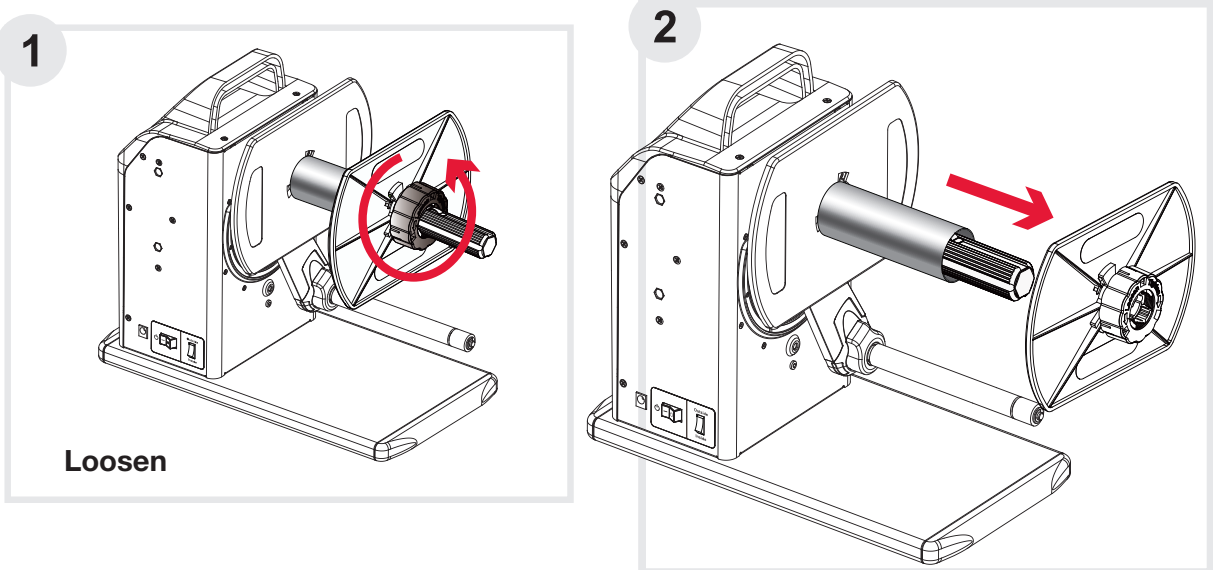


## 2.3 Install and Remove the Removable Label Guide

### Install

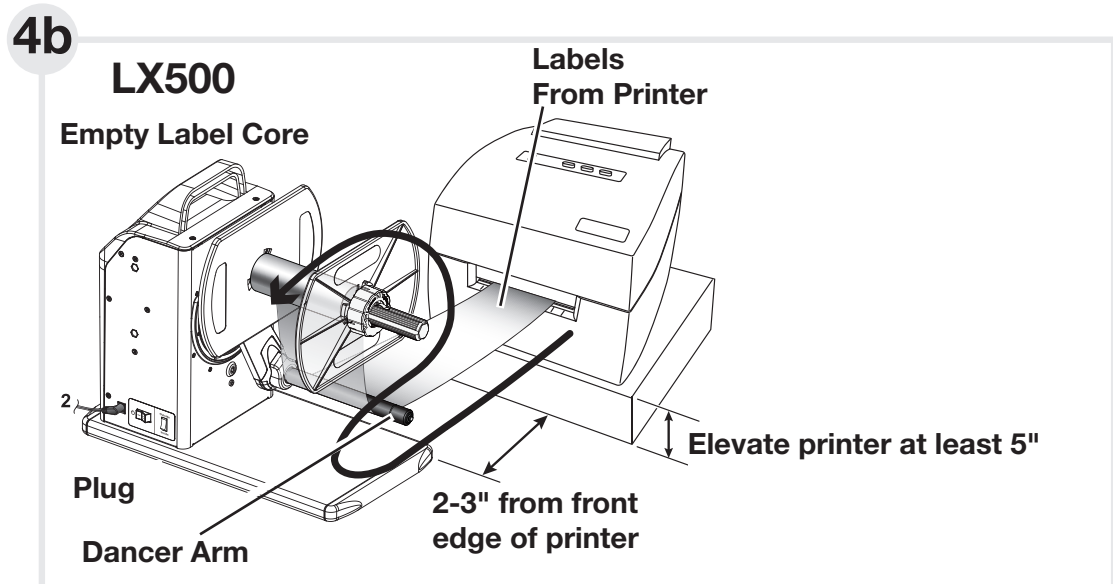
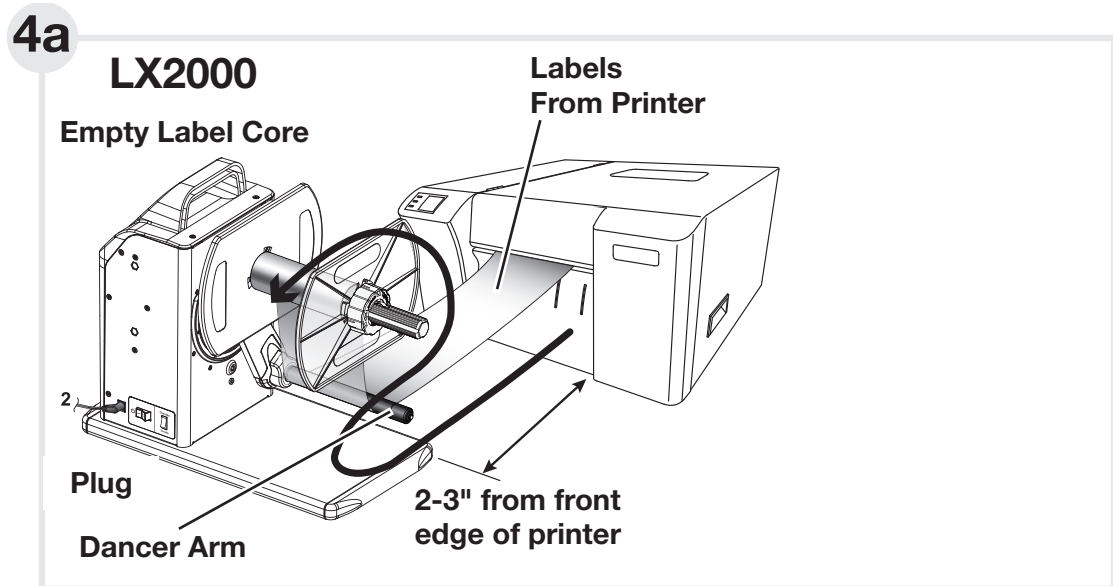
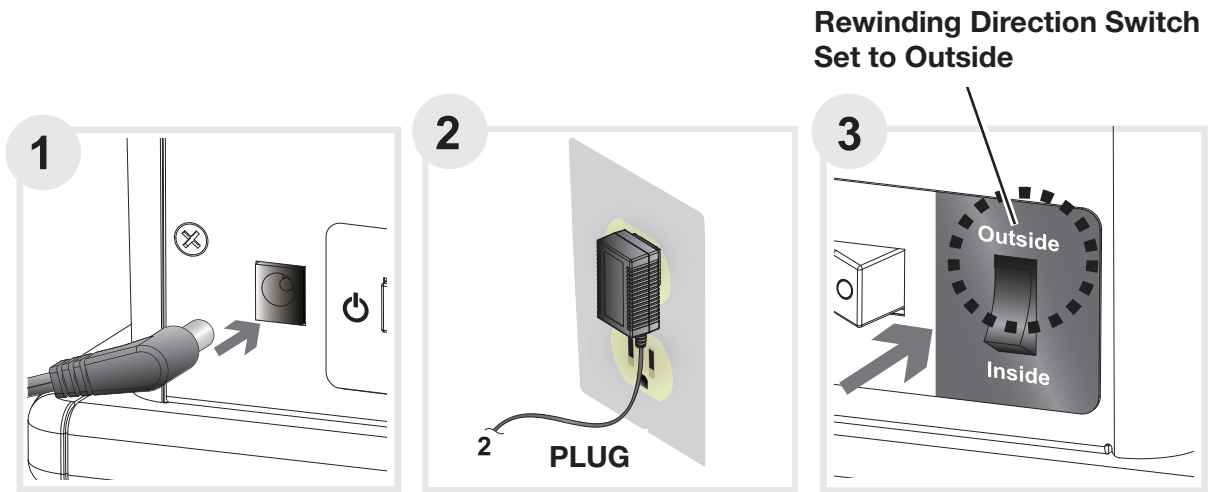


### Remove



## Section 3: RW-7 Label Rewinder Setup

### 3.1 Connection

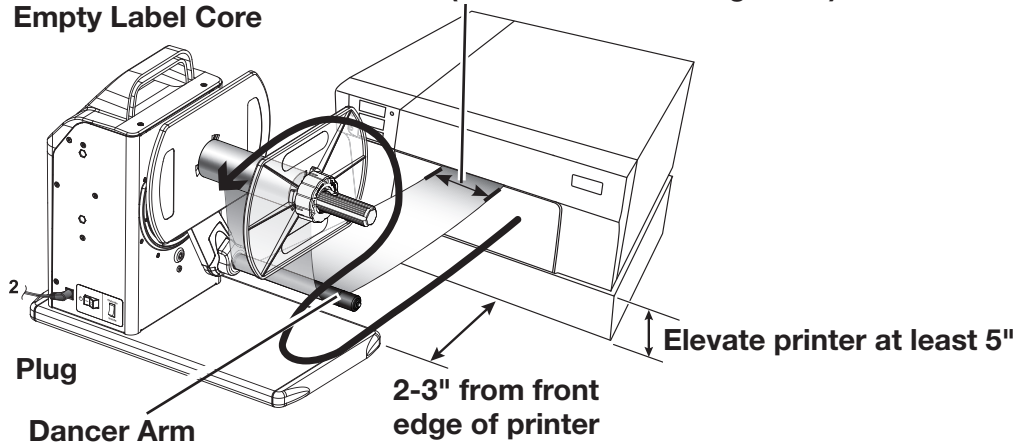


4c

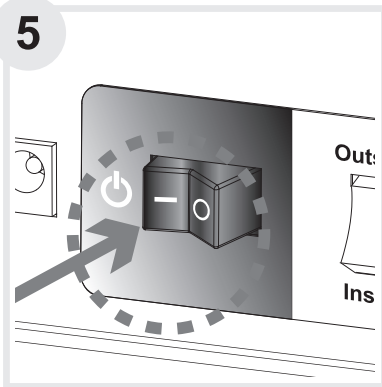
## LX900

Empty Label Core

Labels From Printer  
(must be 4" wide or greater)



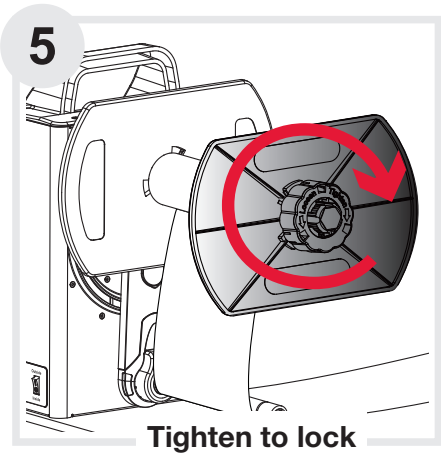
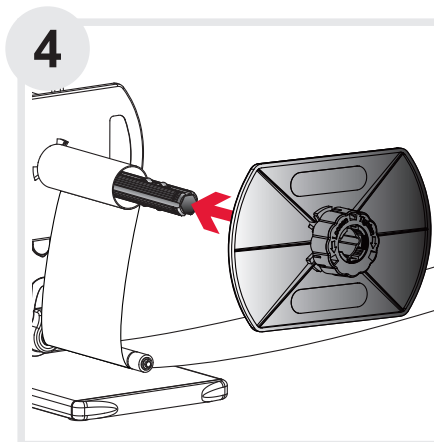
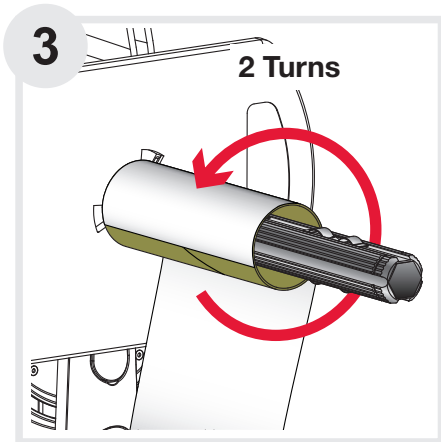
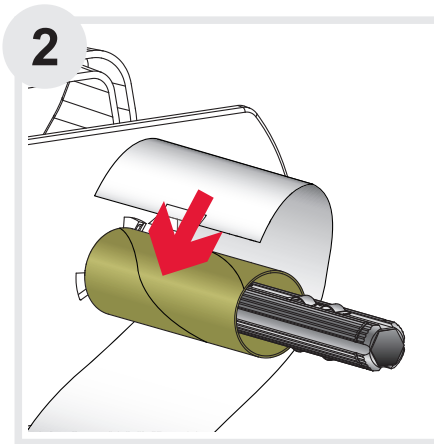
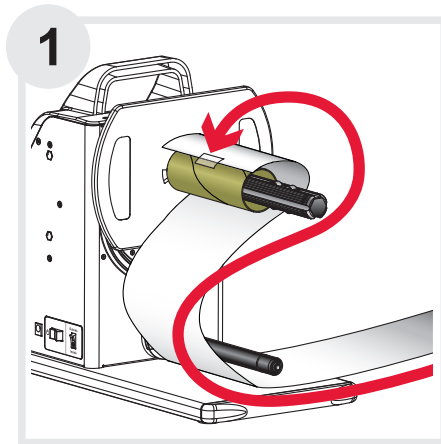
5



### Important Note:

When using the LX900 or LX2000, the plastic tear bar guard should be installed. This guard covers the tear bar teeth and allows the labels to pass over the tear bar freely.

### 3.2 Loading the Label Stock



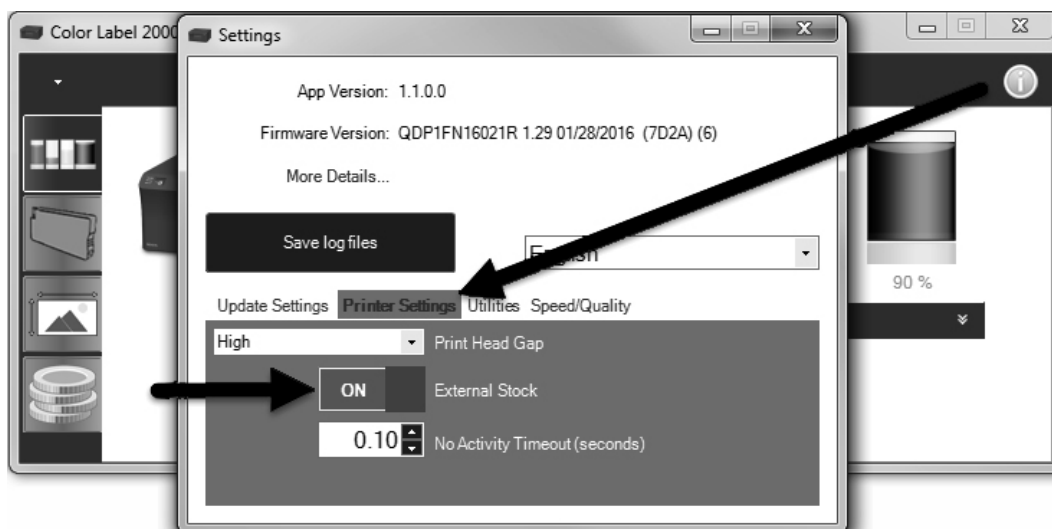


## Section 4: UW-7 Label Unwinder Setup

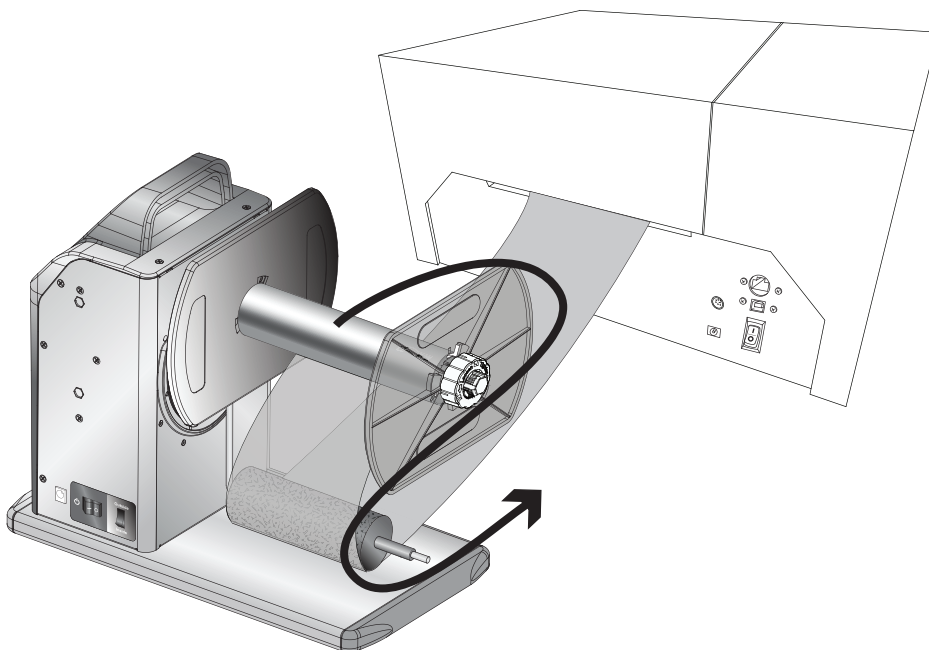
Using a UW-7 you can increase your label capacity by using up to 8" outer diameter rolls.

### 4.1 Setup for LX2000

1. Open the Status Monitor. Click on the info "i" icon in the upper right corner. Click on the Printer Settings Tab. Set "External Stock" to "ON".

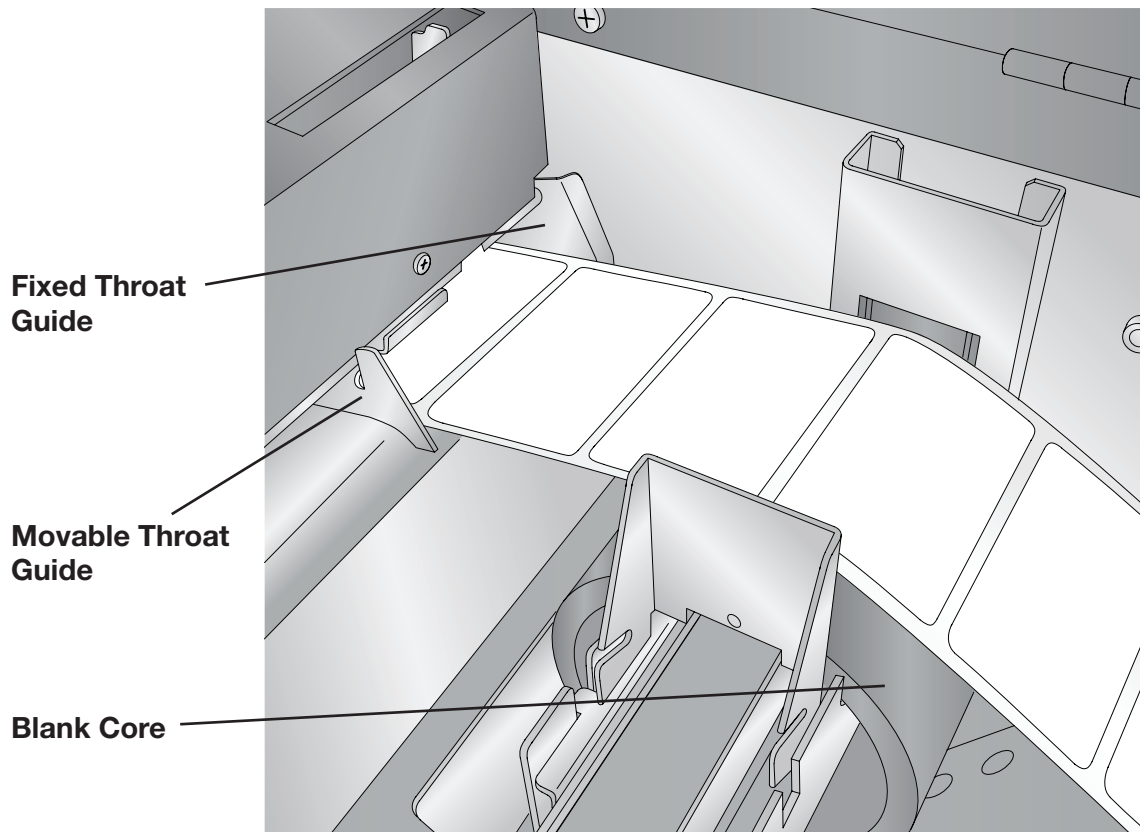


2. Load the label stock as shown. Feed the stock through the opening in the back of the printer. The UW-7 should be as close to the printer as possible without causing interference with the dancer arm. Manually move the dancer arm up and down to ensure that it will not touch the printer.



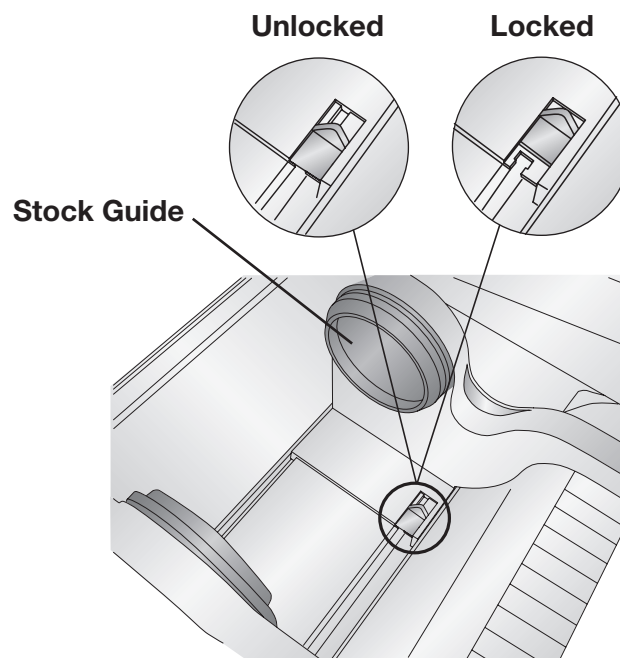


3. Open the Cover. Install an empty core in the LX2000 which is equal to or greater than the width of your label stock. Feed the stock into the printer between the Fixed Throat Guide and the Movable Throat Guide.

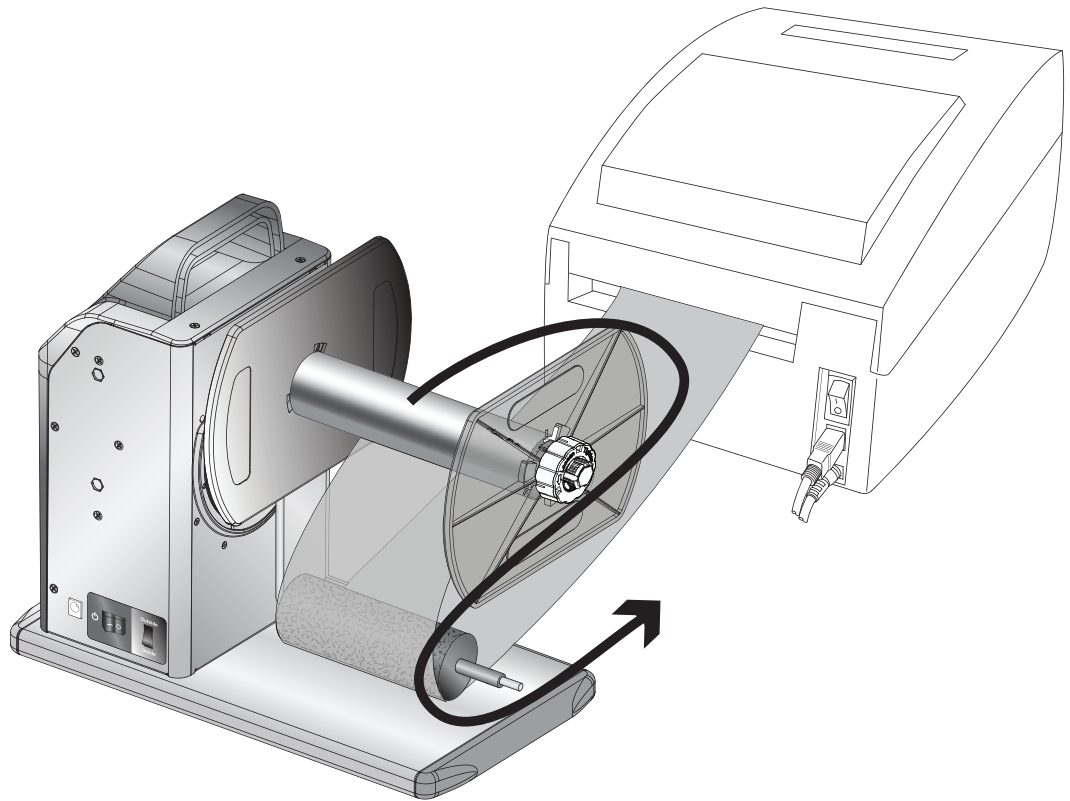


#### 4.2 Setup for LX500 (For use with labels 3" wide or greater)

1. Open the Cover. Load an empty core the same width as the media to be used or move the Stock Guide to the widest position. Push the switch to lock the guide in position.



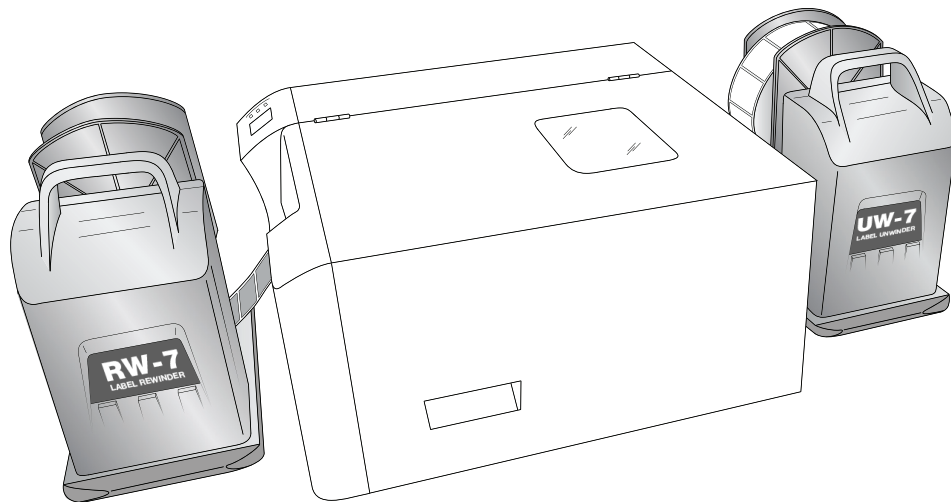
2. Load the label stock as shown. Feed the stock through the opening in the back of the printer. The UW-7 should be as close to the printer as possible without causing interference with the dancer arm. Manually move the dancer arm up and down to ensure that it will not touch the printer.



### 4.3 UW-7 / RW-7 Full Production Mode

You may use both the RW-7 and the UW-7 together to increase your label capacity. In this mode you can unwind and rewind up to 8" outer diameter rolls. Follow the instructions for your printer in sections 3 and 4 to setup full production mode.

**Note: You cannot use the UW-7 with the LX900.**



## Section 5: Product Specifications

---

Model	RW-7 Label Rewinder UW-7 Label Unwinder
Roll Width	7" (177.8mm) maximum
Rewind Speed, Auto Mode	12 IPS (305 mm/ sec)
Label Roll Outer Diameter	8" (203.2mm) maximum
Core Inner Diameter	3" (76.2mm)
Label Roll Weight	11lb (5kg)
Switches	Rewind Control Direction, Power
Motor	Hybrid Motor
Power	100 - 240 VAC 24W, 24V adapter
Environment	Operating Temperature: 41°F to 100°F (5° C to 40° C)
Storage Temperature:	-4°F to 122°F (-20° C to 60° C)
Humidity	10% - 85% non-condensing
Dimensions (HxWxD)	11.92" (303mm) x 7.09" (180mm) x 15.51" (394mm)
Agency Approvals	CE, FCC
Weight	11lb (5kg)
Warranty	1 Year
RW-7 Compatibility	Works with LX400, LX500, LX900*, and LX2000 *(LX900 requires label stock greater than or equal to 4 inches in width)
UW-7 Compatiblity	Works with LX400, LX500 and LX2000

Specifications are subject to change without notice. All company and/or product names are trademarks and/or registered trademarks of their respective owners.

